

COANTE QUARTZ SLAB FLOORING APPLICATION INSTRUCTIONS

coante.com





This document contains the application instructions prepared to achieve optimum performance in flooring applications of Coante quartz surfaces manufactured in accordance with the EN 15285 standard. The flatness of the subfloor, load distribution, appropriate adhesive selection and correct application methods directly affect the durability, stability and long-term performance of the system.


It is recommended that the specified application steps be carefully followed. These instructions constitute technical recommendations representing good practice principles and are important for ensuring the proper performance of the product and the smooth execution of warranty processes.

PREPARATION OF THE INSTALLATION AREA

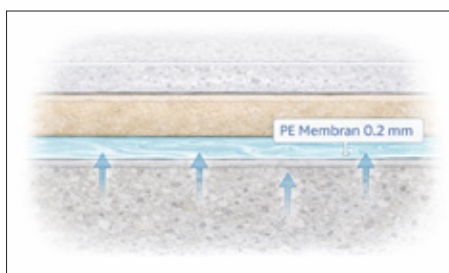
1- CONCRETE SUBFLOOR REQUIREMENTS

The floor must meet the following criteria:

- Concrete curing time: minimum 28 days
- Surface strength: ≥ 25 MPa

The concrete surface must have the following properties: 

- Level
- Free of cracks
- Free of oil and chemical residues
- Mechanically sound



2- MOISTURE BARRIER

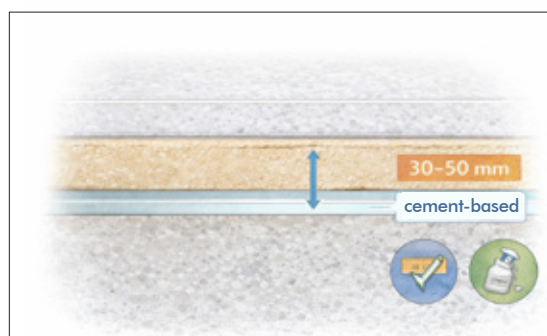
To prevent moisture that may rise from beneath the floor:

- The use of a 0.2 mm PE membrane is recommended.

3- SCREED LAYER

Ideal screed for quartz slab applications:

- Thickness: 30-50 mm
- Type: cement-based



ENVIRONMENTAL CONDITIONS

During installation:

- Ambient temperature: 18-30°C
- Relative humidity: 40-65%
- The HVAC system should be operated when necessary.

In addition, the slabs should be acclimatized by keeping them in the installation area for 48 hours before installation.

✓ Required Adhesive Systems

Standard ceramic adhesives are not sufficient for quartz slabs.

One of the following systems must be used.

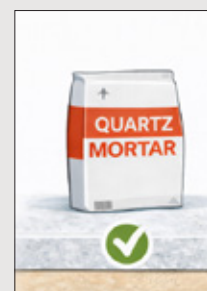
High-Performance Flexible Mortar (C2TE S1 / S2 class)

Properties:

- High adhesion
- Flexible
- Suitable for large formats

Areas of use:

- Residential
- Commercial areas



PRE-INSTALLATION CHECKS

Slab inspection before installation begins:

- Surface pattern
- Thickness tolerance
- Pattern direction
- Surface pattern
- Substrate inspection
- Maximum flatness
- 3 mm / 2 meter tolerance



*** It is recommended to cover the product with materials such as card board during installation in order to facilitate cleaning after the work is completed.**



1- Adhesive Application

Non-notched application is not allowed.

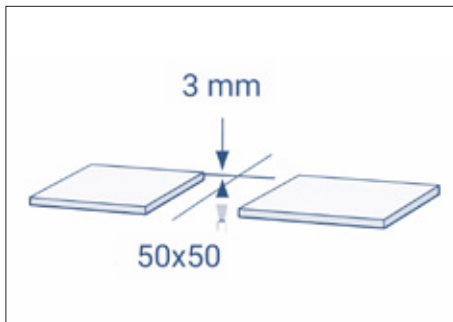
Recommended trowel:
10-12 mm notched trowel.

To prevent voids and ensure impact resistance, the adhesive must be applied both to the substrate and to the back of the slab.

2- Slab Placement

During slab installation:

- A vacuum lifter is used.
- The surface is pressed using a vibrating rubber mallet.

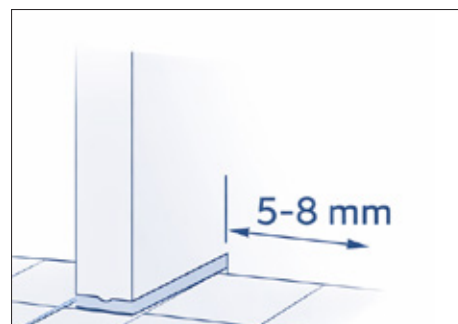


3- Joint Spacing

- 3 mm joint is recommended for every 50 cm length.
 $50 \times 50 = 3 \text{ mm}$
- A joint gap of X2 mm should be left for each multiple of 50 cm.

4- Expansion Joints

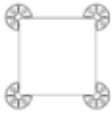


- Expansion joints should be left every 6-8 meters. 5-8 mm movement joint should be left along wall edges.



5- Recommended sizes:

- 50x50, 50x100, 50x150 cm

RAISED FLOOR SYSTEM

RECOMMENDATIONS FOR USERS REGARDING THE USE OF PEDESTAL SUPPORTS IN RAISED FLOOR APPLICATIONS	
PRODUCT SIZE	FLOORING AT HEIGHTS OF 2 CM
50X50 	4 SUPPORTS (3,4 pcs/m ²)
50X100 	* 6 SUPPORTS (3,4 pcs/m ²) * Woven double fiberglass mesh or galvanized steel sheet (3,4 pcs/m ²)
50X150 	* 8 SUPPORTS (10,7 pcs/m ²) * Woven double fiberglass mesh or galvanized steel sheet (10,7 pcs/m ²)

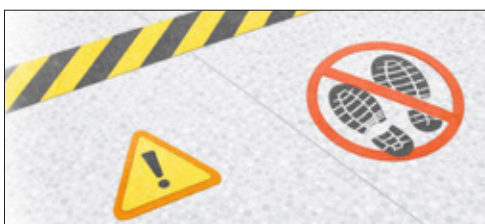
- Used in technical flooring areas. Quartz slabs are placed on a metal pedestal system. Raised floor systems should be installed by following the application guidelines. It is recommended to use one pedestal support for every 60 cm module.

Recommended sizes:

- 50x50, 50x100, 50x150 cm

POST-INSTALLATION PROCEDURES

Pedestrian traffic should be restricted for 24 hours.



- ✓ **Cleaning**
 - pH-neutral cleaner



Critical Application Errors

Most common mistakes in quartz slab flooring:

- Void bonding
- Insufficient screed
- Not leaving expansion joints
- Not leaving sufficient joint spacing
- Thin adhesive layer
- Moist concrete



[coante.com](https://www.coante.com)

